




# AXE7800


## Tri-Band Wi-Fi 6E Router


Faster. Broader. Unstoppable.



Archer AXE95

 Ultra-Fast Wi-Fi  
Up to 7800 Mbps†

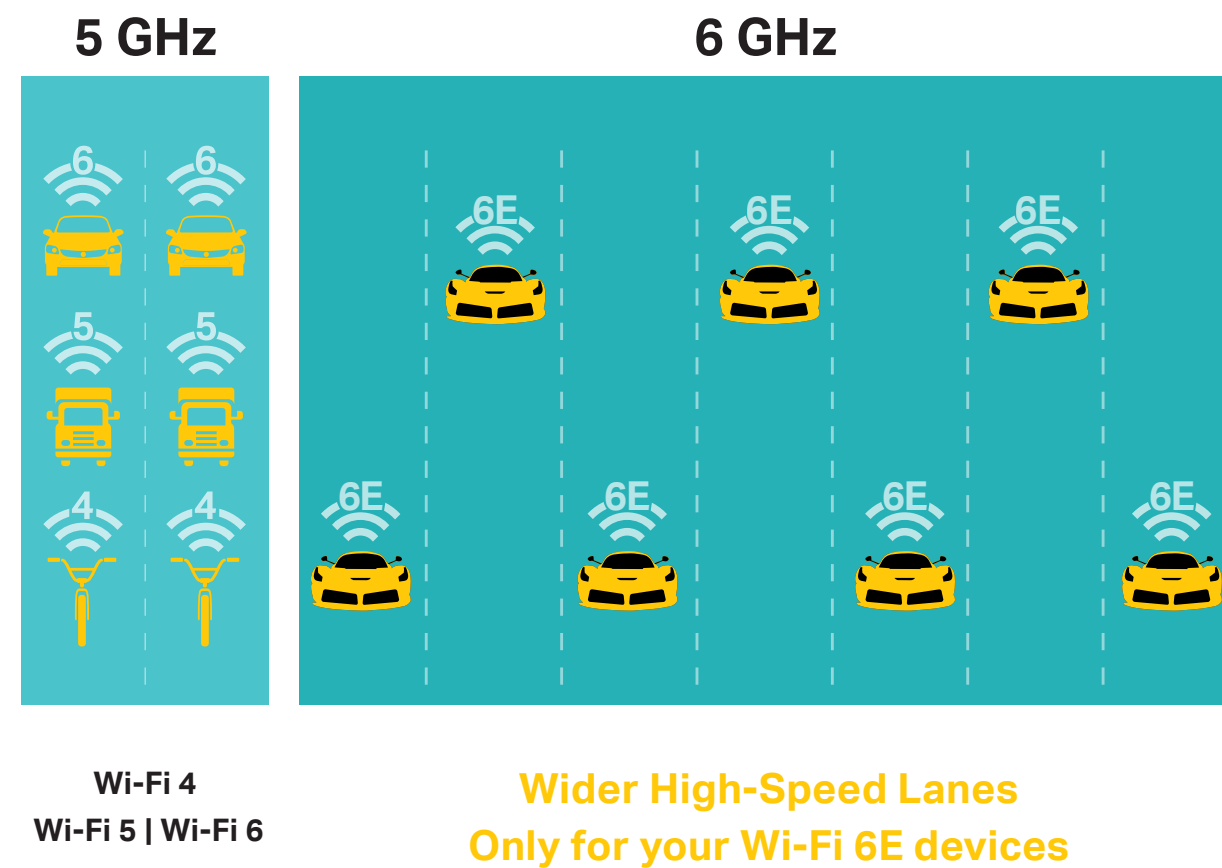
 Multi-Gig Internet  
2.5 Gbps Port

 Powerful Processing  
1.7 GHz Quad-Core CPU

**6E** Wi-Fi 6E  
Greenfield 6 GHz Band

# Highlights

## Wi-Fi 6E<sup>+</sup> Huge Leap Forward for Wi-Fi



### Robust High-Speed Connections

Connect to an even faster Wi-Fi. The brand-new 6 GHz band is wide enough for several extra 160 MHz channels, preventing competition over bandwidth and drops in speed.†

### Clean and Congestion-Free

The 6 GHz band is exclusive to Wi-Fi 6E devices, which prevents interference from legacy devices. Unleash the most out of the latest Wi-Fi and enjoy congestion-free networking.

## TP-Link HomeShield

TP-Link's premium security services keep your home network safe with cutting-edge features for network and IoT protection.\*



### Network Protection

Detect cyber threats to keep your privacy and connected devices well protected.



### Quality of Service (QoS)

Prioritize your bandwidth needs to get a better networking experience.



### Parental Controls

Manage online time and block inappropriate content to maintain healthy online habits.



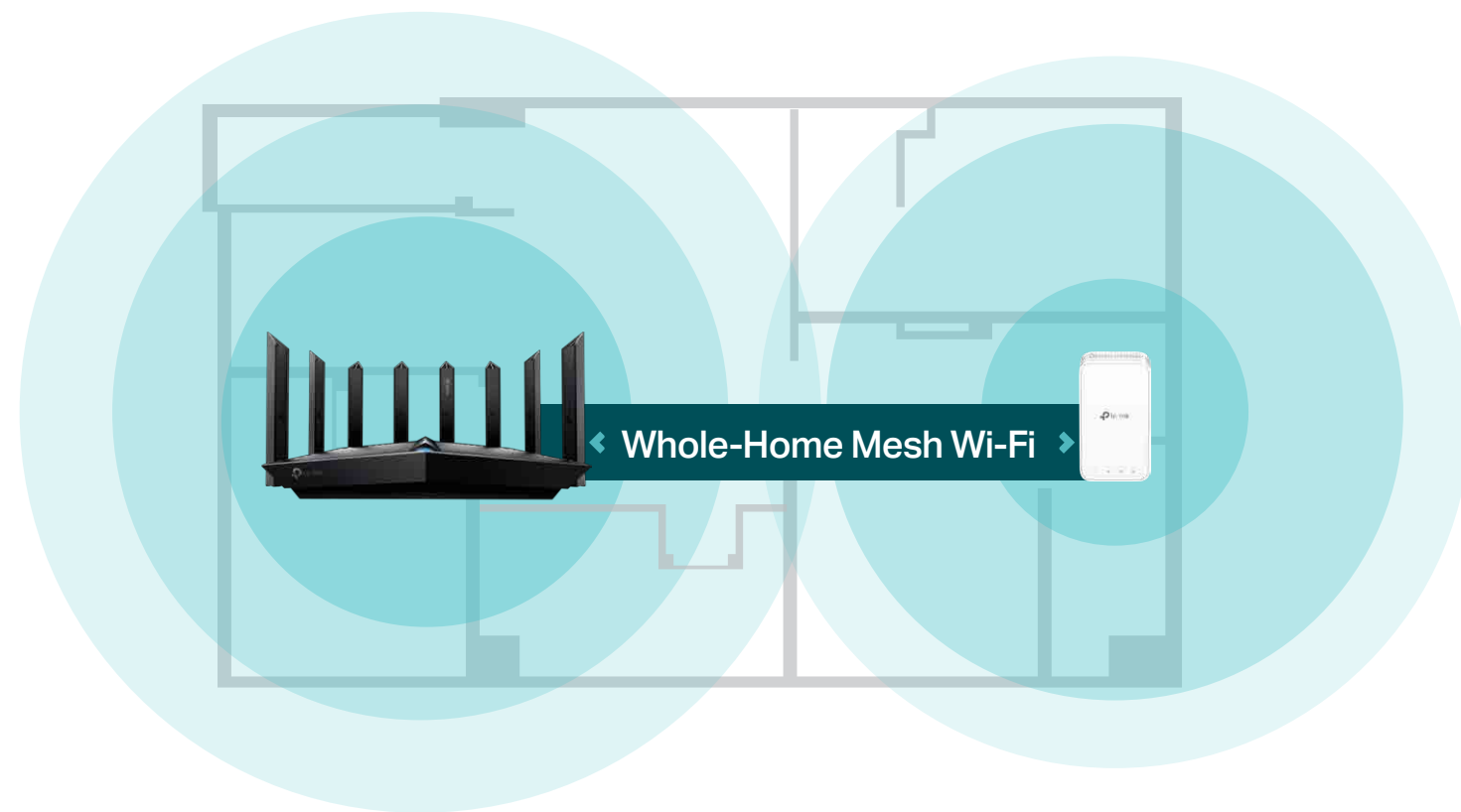
### Comprehensive Reports

Gain full statistics and insights to help you understand your home network better.

# Highlights

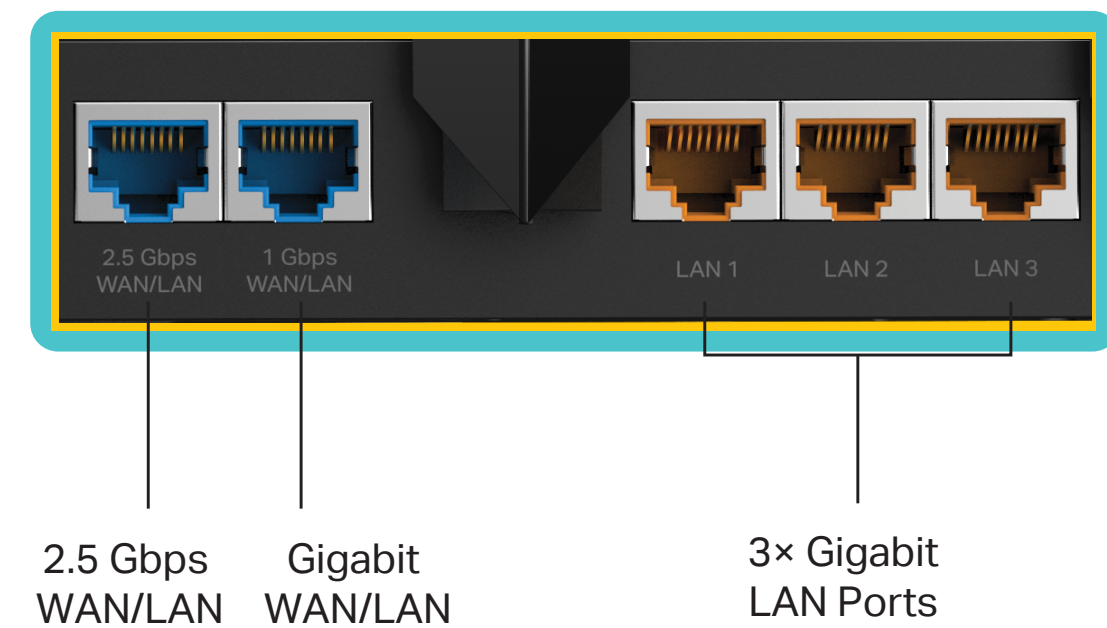
## Flexible Whole-Home Wi-Fi

OneMesh™ is a simple way to form a Mesh network with a single Wi-Fi name for seamless whole-home coverage. Connect a OneMesh™ range extender to Archer AXE95 and never waste time searching for a stable connection again.



## Superior Connectivity

Archer AXE95's 2.5 Gbps and 1 Gbps WAN/LAN ports offer you maximum flexibility while boosting your total internet throughput. Three gigabit LAN ports give you full control with blistering data transfer speeds for peak performance.

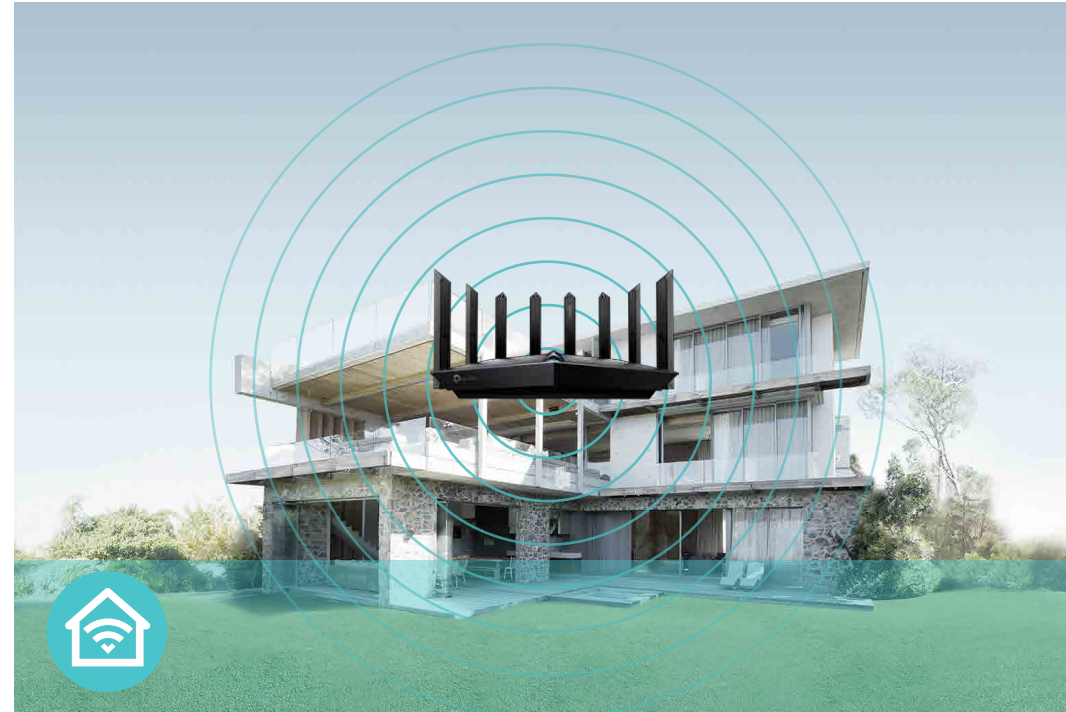


# Features



## Speed

- AXE7800 Wi-Fi – 7.8 Gbps tri-band Wi-Fi 6E enables gaming, streaming and high-speed downloading on multiple devices—all at the same time†
- Greenfield 6 GHz Band – Provides robust high-speed connections with a brand-new expansive and congestion-free band
- Multi-Gig Port – The 2.5 Gbps WAN/LAN port breaks the bottleneck for multi-Gig internet and fast home NAS connections



## Wi-Fi Range

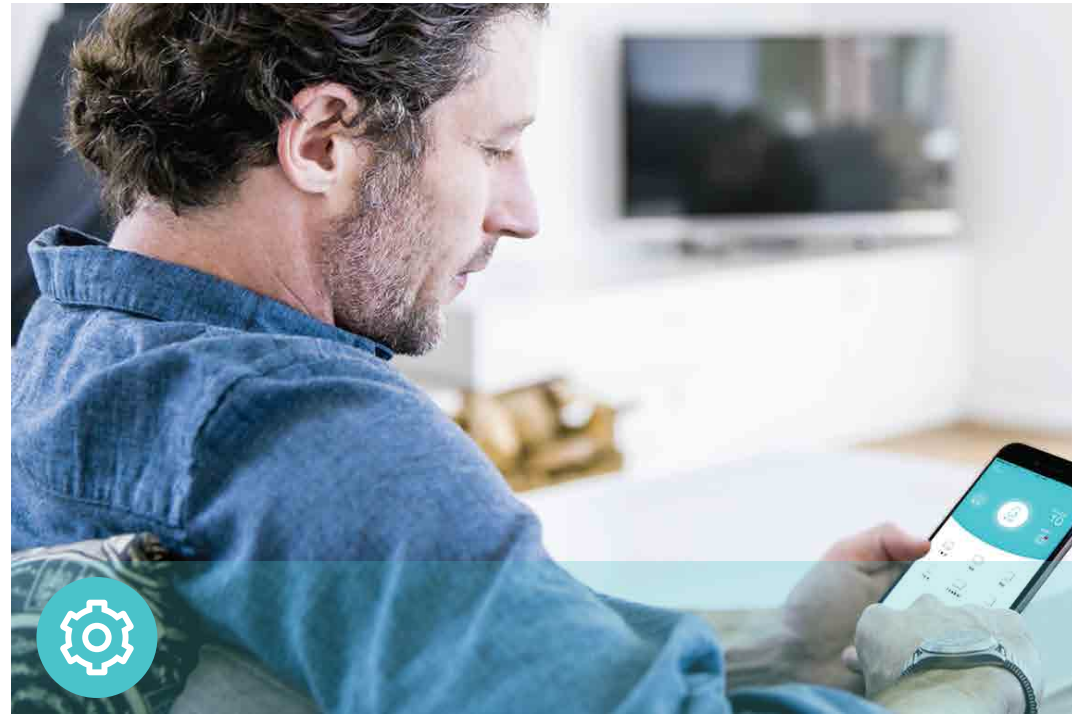
- Expansive Coverage – 8× high-performance antennas, high-power FEM, Beamforming, and 4T4R ensure broad coverage
- Seamless OneMesh network – Transfer between signals without any drops or lag and manage your whole network using a centralized panel



## Reliability

- Connect 100+ Devices – An advanced tri-band structure connects more devices without any drops in speed
- Reduced Latency – OFDMA and DL MU-MIMO work together to serve multiple devices simultaneously and reduce lag
- Smart Connect – Intelligently assigns each device to the best Wi-Fi band for optimal performance

# Features



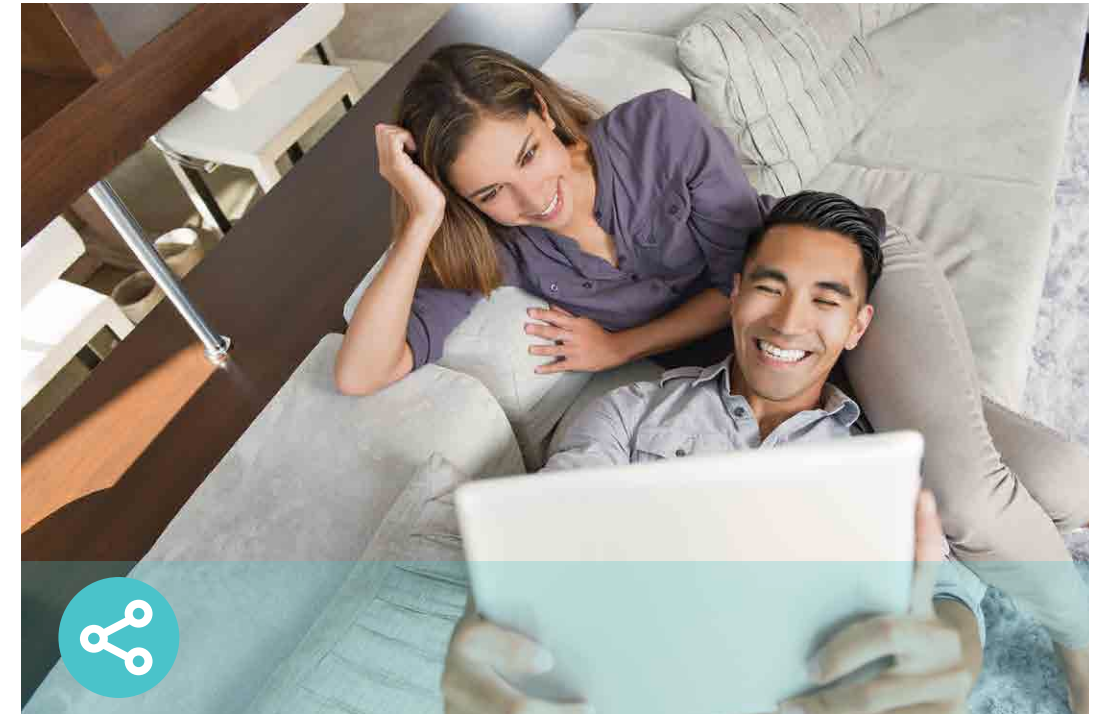
## Ease of Use

- Intuitive Web UI – Ensures quick and simple installation without hassle
- WPS (Wi-Fi Protected Setup) – Help you to quickly and securely connect your devices to the router's network with a tap
- Power On/Off – Conveniently power on or off your router as required
- Hassle-free Management with Tether App – Network management is made easy with the TP-Link Tether app, available on any Android and iOS device



## Security

- HomeShield – TP-Link's premium security services keep your home network safe with cutting-edge features for network and IoT protection
- Guest Network – Provides separate access for guests to secure the home network
- Access Control – Establishes a whitelist or blacklist to allow or restrict certain devices to access the internet
- Encryptions for Secure Network – WPA/WPA2-Personal, WPA2/WPA3-Personal, WPA/WPA2-Enterprise encryptions provide active protection against security threats



## Easy Sharing

- USB Port – Connects external storage devices to rapidly share files, photos, and videos
- Built-in Media Server – Allows you to play music, watch videos and view photos from any device on your network

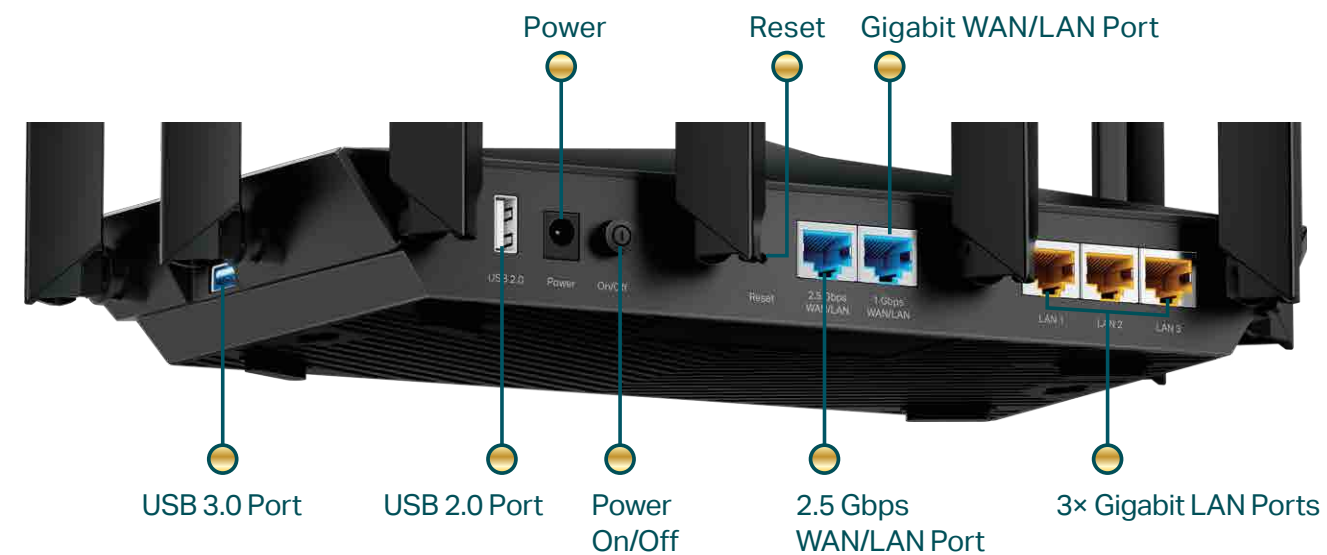
# Specifications

## Wireless

- Standards: IEEE 802.11ax 6 GHz, IEEE 802.11ax/ac/n/a 5 GHz, IEEE 802.11ax/n/b/g 2.4 GHz
- WiFi Speeds: 2402 Mbps (6 GHz) + 4804 Mbps (5 GHz) + 574 Mbps (2.4 GHz)<sup>†</sup>
- WiFi Range: 8× High-Performance Antennas, Beamforming, High-Power FEM, 4T4R
- WiFi Capacity: Tri-Band, 4×4 MU-MIMO, OFDMA, Airtime Fairness, DFS, 8 Streams
- Working Modes: Router Mode, Access Point Mode

## Hardware

- Processor: 1.7 GHz Quad-Core CPU
- Ethernet Ports: 1× 2.5 Gbps WAN/LAN Port, 1× 1 Gbps WAN/LAN Port, 3× 1 Gbps LAN Ports
- USB Support: 1× USB 3.0 Port, 1× USB 2.0 Port
- Buttons: Wi-Fi On/Off Button, Power On/Off Button, LED On/Off Button, WPS Button, Reset Button
- Power: 12 V/3.3 A



## Security

- WiFi Encryption: WPA, WPA2, WPA3, WPA/WPA2-Enterprise (802.1x)
- Network Security: SPI Firewall, Access Control, IP & MAC Binding, Application Layer Gateway, HomeShield Security
- Guest Network:
  - 1× 6 GHz Guest Network, 1× 5 GHz Guest Network, 1× 2.4 GHz Guest Network
- VPN Server: OpenVPN, PPTP, L2TP VPN Server
- VPN Client: OpenVPN, PPTP, L2TP VPN Client

## Software

- Protocols: IPv4, IPv6
- Service Kits: HomeShield
- OneMesh: Supported
- Parental Controls: HomeShield Parental Controls
- WAN Types: Dynamic IP, Static IP, PPPoE, PPTP, L2TP
- Quality of Service: QoS by Device
- Cloud Service: Auto Firmware Upgrade, TP-Link ID, DDNS
- NAT Forwarding: Port Forwarding, Port Triggering, DMZ, UPnP, Virtual Server
- DDNS: TP-Link, NO-IP, DynDNS

# Specifications

## Physical

- Dimensions (W×D×H): 12.2 × 8.1 × 6.8 in (310.9 × 206.9 × 173.7 mm)
- Package Contents:
  - Wi-Fi Router Archer AXE95
  - Power Adapter
  - RJ45 Ethernet Cable
  - Quick Installation Guide

## Other

- System Requirements:
  - Internet Explorer 11+, Firefox 12.0+, Chrome 20.0+, Safari 4.0+, or other JavaScript-enabled browser
  - Cable or DSL Modem (if needed)
  - Subscription with an internet service provider (for internet access)
- Certifications: FCC, RoHS
- Environment:
  - Operating Temperature: 0°C~40°C (32°F ~104°F)
  - Operating Humidity: 10%~90% non-condensing



For more information, please visit

<http://www.tp-link.com/products/details/Archer-AXE95.html>

or scan the QR code left

## Test Data

- WiFi Transmission Power:
  - FCC: ≤ 28 dBm (2.4 GHz)
  - ≤ 30 dBm (5 GHz)
  - ≤ 22 dBm (6 GHz)
- WiFi Reception Sensitivity:
  - 2.4 GHz:
    - 11ax HE20 MCS0:-95dBm, 11ax HE20 MCS11:-64dBm
    - 11ax HE40 MCS0:-92dBm, 11ax HE40 MCS11:-62dBm
  - 5 GHz:
    - 11ax HE20 MCS0:-94dBm, 11ax HE20 MCS11:-63dBm
    - 11ax HE40 MCS0:-91dBm, 11ax HE40 MCS11:-60dBm
    - 11ax HE80 MCS0:-88dBm, 11ax HE80 MCS11:-57dBm
    - 11ax HE160 MCS0:-85dBm, 11ax HE160 MCS11:-54dBm
  - 6 GHz:
    - 11ax HE20 MCS0:-93dBm, 11ax HE20 MCS11:-62dBm
    - 11ax HE40 MCS0:-90dBm, 11ax HE40 MCS11:-59dBm
    - 11ax HE80 MCS0:-87dBm, 11ax HE80 MCS11:-56dBm
    - 11ax HE160 MCS0:-84dBm, 11ax HE160 MCS11:-53dBm

<sup>†</sup>Maximum wireless signal rates are the physical rates derived from IEEE Standard 802.11 specifications. Actual wireless data throughput and wireless coverage are not guaranteed and will vary as a result of network conditions, client limitations, and environmental factors, including building materials, obstacles, volume and density of traffic, and client location.

<sup>‡</sup>Use of Wi-Fi 6 (802.11ax), Wi-Fi 6E, and features including OFDMA, MU-MIMO, 1024-QAM, and HE160 require clients to also support the corresponding features. Seven 160MHz channels may not be all available in the 6 GHz band in some regions/countries due to regulatory restrictions or product design considerations.

<sup>§</sup>2.5 Gbps internet speeds require compatible service plans and equipment. 2.5 Gbps and Gigabit ports cannot be concurrently configured as WAN ports.

<sup>\*</sup>Saving clients' battery power requires clients to also support the 802.11ax Wi-Fi standard. Actual power reduction may vary as a result of network conditions, client limitations, and environmental factors.

<sup>\*</sup>HomeShield includes the Free Basic Plan. Fees apply for the Pro Plan. Visit [tp-link.com/homeshield](http://tp-link.com/homeshield) for more information

<sup>\*\*</sup>Use of WPA3 requires clients to also support the corresponding feature.

<sup>\*\*\*</sup>This router may not support all the mandatory features as ratified in Draft 3.0 of the IEEE 802.11AX specification.

<sup>\*\*\*\*</sup>Further software upgrades for feature availability may be required.

©2022 TP-Link